

# Optra

Innovative Accessories

Innovative  
accessories  
for  
simplified  
treatment  
procedures

OptraGate®  
OptraDam® Plus  
OptraSculpt® Pad  
OptraSculpt®  
OptraPol®  
OptraFine®  
OptraStick®



ivoclar  
vivadent®  
passion vision innovation

# Simplified isolation

*relative isolation*

## OptraGate®

### Simplified access to the cavity

- Even retraction of the lips and cheeks
- Enlarged and easily accessible treatment field
- Effective and fast relative isolation

### Stress-free treatment

- Easy placement
- More time to focus on the actual treatment procedure
- Relieves the practice team and dentist

### High patient comfort

- Soft and flexible material with recesses to accommodate the lip frenula
- Gentle to dental tissue – also suitable for children
- Latex-free – well tolerated

### Range of indications



- Professional care



- Restorative therapy



- Intraoral scans

### Additional indications

- Diagnostics
- Tooth whitening
- Orthodontics
- Pediatric dentistry
- Prosthetics



User video available at  
[www.ivoclarvivadent.com](http://www.ivoclarvivadent.com)

Source: Ivoclar Vivadent AG

Treatment field



**NEW:** now available  
in blue and pink

*absolute isolation*

# OptraDam® Plus

## Good overview

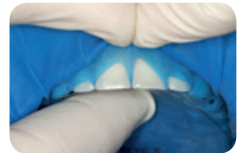
- Optimum adaptation to the anatomy of the oral cavity thanks to the three-dimensional shape
- Even retraction of the lips and cheeks in all directions
- Enlarged treatment field

## Easy and fast placement

- Integrated frame and perforation pattern
- Allows hold without clamps
- Contact points are easily overcome

## High patient comfort

- Provides gentle retraction and protection of the soft tissues
- Low coverage of extraoral tissues



Source: Ivoclar Vivadent AG, 2012



# Simplified contouring

*anterior region*

## OptraSculpt® Pad

### Effortless adaptation due to anti-stick effect

- Reduced adhesion of the composite to the instrument
- Efficient and easy contouring

### Professional esthetics

- No instrument marks on the restoration surface
- Allows for a homogeneous surface design
- Additional reference scales on the instrument handle provide orientation for the axial position and width of anterior teeth
- Suitable for the build-up of direct veneers or large Class IV restorations

### High efficiency

- Faster contouring
- Reduced effort required for finishing and polishing



Source: Dr Ronny Watzke, Liechtenstein, 2014

*Suitable for the contouring  
of lab composites*



User video available at  
<http://www.ivoclarvivadent.com/embed/16237>



*posterior region*

# OptraSculpt®

## **Simplified adaptation due to non-stick effect**

- Reduced adhesion of the composite to the instrument
- Efficient and convenient contouring

## **High flexibility**

- 6 attachments for different indications
- Modelling tips can be rotated by 360° and snapped into place at any angle desired

## **Efficiency increase**

- Faster contouring
- Reduced effort required for finishing and polishing



# Simplified polishing

composite

## OptraPol®

### 1-step polishing system

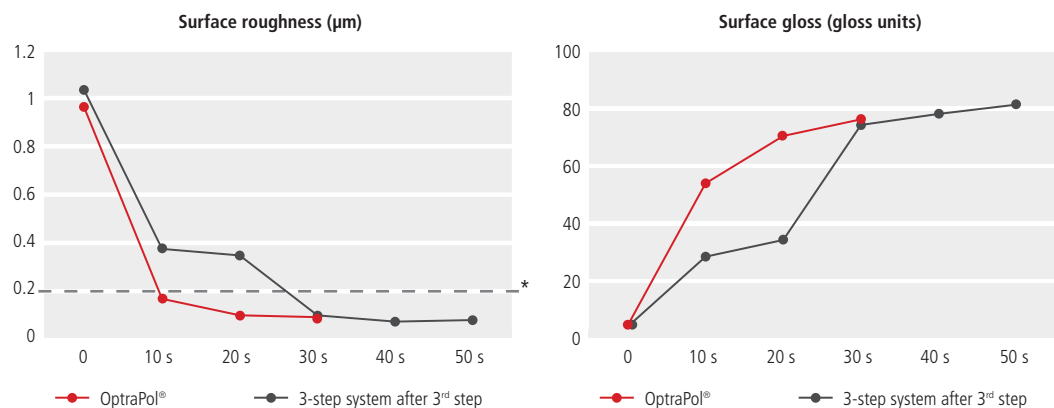
- Radiant high-gloss restoration surfaces in only one step
- High diamond content (approx. 72 wt. %) for excellent results

### High efficiency

- High gloss after a short time and in only one step
- No need for changing tips

### Long-lasting and economical

- High dimensional stability
- High wear resistance
- Autoclavable and reusable
- Cost-saving
- 4 shapes for different treatment areas



\* clinically relevant threshold value (Bollen, C. M. et al, 1997)

Sources:

*In vitro* test of competitors' polishing systems; composite: Tetric EvoCeram® (Dr S. Heintze, Ivoclar Vivadent, Schaan, 2009)

Bollen, C. M., Lambrechts, P. & Quirynen, M. (1997). Comparison of surface roughness of oral hard materials to the threshold surface roughness for bacterial plaque retention: a review of the literature. *Dent Mater*, 13(4), 258-269.



# OptraFine®

## Highly coordinated with ceramic materials

- High-performance polishing system
- Suitable for ceramics (e.g. including IPS Empress® CAD and IPS e.max® CAD)
- Particularly smooth restoration surfaces

## 3-step polishing system

- Step 1: Pre-polishing using "light blue"
- Step 2: Polishing using "dark blue"
- Step 3: High gloss with brushes and polishing paste

## Long-lasting and economical

- High wear resistance
- Autoclavable and reusable
- Cost-saving
- 3 shapes for different treatment areas



# Simplified placement

*indirect restorations*

## OptraStick®

### **Precise positioning**

- Adhesive tip allows accurate placement of restorations
- Easy pick-up and release
- Particularly suitable for the positioning of small indirect restorations

### **Suitable for almost any material**

- Inlays, onlays, crowns and veneers made of ceramic (e.g. IPS Empress® or IPS e.max®)
- Veneers made of IPS d.SIGN® and IPS InLine®
- Inlays, onlays and  $\frac{3}{4}$  crowns made of gold





# Delivery forms



## OptraGate

### Assortment

40 x size R (regular)  
40 x size S (small)

### Refill R

80 x size R (regular)

### Refill S

80 x size S (small)

### Refill Junior

80 x size Junior



## OptraGate in blue and pink

### Junior Assortment/ blue and pink

20 x size Junior blue

20 x size Junior pink

### Starter Kit/ blue and pink

4 x size Junior blue

4 x size Junior pink

4 x size S (small) blue

4 x size S (small) pink

### Small Assortment/ blue and pink

20 x size S (small) blue

20 x size S (small) pink



## OptraDam Plus

### Assortment

25 x size R (regular)

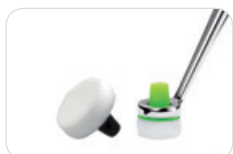
25 x size S (small)

### Refill R

50 x size R (regular)

### Refill S

50 x size S (small)



## OptraSculpt Pad

### Assortment

1 x OptraSculpt Pad Instrument

1 x OptraSculpt Pad Refill/4 mm/60

1 x OptraSculpt Pad Refill/6 mm/60

**OptraSculpt Pad Refill/4 mm/60**

**OptraSculpt Pad Refill/6 mm/60**

**OptraSculpt Pad Instrument Refill**



## OptraSculpt

### Assortment

1 x Modelling instrument (single-ended)

1 x Modelling instrument (double-ended)

40 x Modelling tips (ball)

40 x Modelling tips (point)

40 x Modelling tips (spatula)

40 x Modelling tips (chisel)

40 x Modelling tips (cylinder)

40 x Modelling tips (pyramid)

### Refill Modelling Instrument

1 x Modelling instrument (single-ended)

### Refill Modelling Instrument

1 x Modelling instrument (double-ended)

### Refill Modelling Tips

Each shape is separately available in packets of 100.



## OptraPol

### Assortment

6 x Polishers small flame

4 x Polishers large flame

4 x Polishers cup

4 x Polishers lens

### Refill Polisher

Each shape is separately available in packets of 10.



## OptraFine

### Assortment

2 x Flame F (finisher)

2 x Flame P (polisher)

2 x Cup F

2 x Cup P

2 x Disc F

2 x Disc P

6 x Nylon brushes

1 x Polishing paste

### Refills

Each polishing instrument is separately available in packets of 10. Polishing paste refills are available in single syringes.



## OptraStick

Refills of 50



## Direct Restoratives

Optra Accessories form a part of the "Direct Restoratives" product category. The products of this category cover the procedure involved in the direct restoration of teeth – from preparation to restoration care. The products are optimally coordinated with each other and enable successful processing and application.



### THESE ARE FURTHER PRODUCTS OF THIS CATEGORY:

#### Tetric EvoCeram® Bulk Fill & Tetric EvoFlow® Bulk Fill

High-performance posterior composite



The most efficient posterior composite!

- Increment thickness of up to 4 mm due to the highly reactive light initiator Ivocerin®
- Dentin- or enamel-like volume replacement
- 10 seconds ( $\geq 1,000 \text{ mW/cm}^2$ )
- 47% less time required than with the conventional technique\*

\* compared to Tetric EvoFlow® and Tetric EvoCeram®. Data available on request.

#### Bluephase® Style

The curing light



The smallest LED for every use

- Every hand – comfortable to hold for men and women
- Every material – universal use due to polywave® LED with broadband spectrum
- Every time – optional corded operation due to Click & Cure

Would you like to know more about the products of the "Direct Restoratives" category? Simply get in touch with your contact person at Ivoclar Vivadent or visit [www.ivoclarvivadent.com](http://www.ivoclarvivadent.com) for more information.

Ivoclar Vivadent AG  
Benderstr. 2  
9494 Schaan  
Liechtenstein  
Tel. +423 235 35 35  
Fax +423 235 33 60  
[www.ivoclarvivadent.com](http://www.ivoclarvivadent.com)

Descriptions and data constitute no warranty of attributes.  
Printed in Liechtenstein

© Ivoclar Vivadent AG, Schaan, Liechtenstein.  
640890/2015-06-08/EN/Rev. 1

ivoclar  
vivadent®  
passion vision innovation